



ECC

Ready for any currency

Our ANKER Euro Cash Cassette ECC is based on the same concept as the SCC. The difference is its size and the split of the coin and note compartments. This cash cassette is the plastic cassette with the largest capacity in our portfolio. Due to its configuration, it provides space available for all currencies and can hold a large volume of change.

The ECC is also flexible in terms of the closing variant. As it is electronically controlled and opened by the cash register system, it can be completely used without a lock, if required.

The ECC can be used with a quality lock, various, specific locking mechanisms or without a lock. For straightforward manual opening of the cassette, products are available for you, such as our manual opening trigger. An optional security key lock offers you additional security.

The cassette recently proved its unsurpassed quality once again, while achieving over 4.2 million openings without problems in a test conducted by an independent institute.



Empty cassette



Closed cassette



Cassette with 9 coin compartments

THE ECC AT A GLANCE

- Large volume for higher cash holdings
- Individually insertable coin compartments
- With receipt slot
- Can be used without lock
- Robust and durable



→ FUNCTIONAL LAYOUT

The money insert can be removed separately with two note compartments. Under the coin insert is a universal compartment in which receipts can be stowed through the slot.



Removable insert

→ ELECTRICAL CONNECTION OPTIONS

Compatible with all systems.

→ CONNECTION CABLE

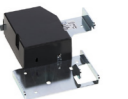
To order separately: RJ12 and SDL, other cables on request.



Filled cassette

→ LOCK ON THE CASH CASSETTE

2-position lock incl. 2 locks; identical, random or no lock, other solutions on demand.



Base

PRODUCT OVERVIEW	ECC
DIMENSIONS (W X D X H) IN MM CA.	482 x 175 x 100
WEIGHT IN KG CA.	1,9
MATERIAL	ABS plastic
COLOUR	Anthracite RAL 7021 ● Light grey RAL 9002 ○
NUMBER OF COMPARTMENTS	6 note, up to 9 coin compartments
ELECTR. VERSION IN VOLTS	12, 24, 36
INTERFACES	Compatible with all systems
CLOSURE // TYPE OF CLOSURE	2-position-lock/without lock// identical or random locks available, other closures on request
WEIGHABLE COIN CUPS	Optional



Note: The base plate is assigned to the cash desk and the cash cassette to the operator.