



# UCC

## Metal cassette according to the ANKER principle

We also offer a solution to the proponents of metal housings, with the ANKER Universal Cash Cassette UCC, which fits in the well approved ANKER principle. The assembly of the outer housing is performed in the established manner, on a base plate. This allows easy dismantling for cleaning purposes.

However, in contrast to our plastic cassettes, the base is delivered without any electronics, as they are installed in the outer housing. Upon request, the assembly of the outer housing is also possible without a base.

The UCC is directly opened electronically by the cash register system. The outer cassette is available with a quality lock or completely without a lock. For the inner cassette, a quality lock or a turnkey are available. The turnkey is a keyless version, with which a bolt in the lid can be engaged, to close the inner cassette.



Empty cassette



Closed cassette



Inner cassette with lid

### THE UCC AT A GLANCE

- *Sturdy full metal outer cash cassette*
- *Individually removable inner cassette with handles that can be pulled out*
- *Lockable inner cassette for secure transport*
- *Robust and durable*



#### → LOCKABLE INNER CASSETTE

The inner cassette can be easily removed with extendable handles and even locked for safe transport. In addition, the coin insert can also be removed individually.



Removable inserts

#### → ELECTRICAL CONNECTION OPTIONS

Compatible with all systems



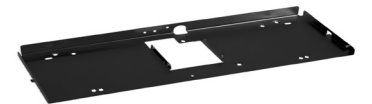
Filled cassette

#### → CONNECTION CABLE



3 m RJ12 cable or 3.2 m SDL cable, others on request

#### → LOCK ON THE CASH CASSETTE

2-position lock incl. 2 locks; identical, random or no lock, other solutions on demand



Hygiene base

| PRODUCT OVERVIEW                 | UCC   |
|----------------------------------|---|
| DIMENSIONS (W X D X H) IN MM CA. | 460x 169 x 100  |
| WEIGHT IN KG CA.                 | 4.8   |
| MATERIAL                         | Galvanized steel, inner cassette: ABS plastic   |
| COLOR                            | Anthracite RAL 7021 ● Light grey RAL 9002 ○   |
| NUMBER OF COMPARTMENTS           | 6 note, 9 (optionally up to 10) coin compartments   |
| ELECTR. VERSION IN VOLTS         | 12, 24  |
| INTERFACES                       | Compatible with all systems   |
| CLOSURE // TYPE OF CLOSURE       | 2-position-lock/without lock// identical or random locks available, other closures on request |
| WEIGHABLE COIN CUPS              | Yes (optional)  |
|                                  |          |
| REMOVABLE INNER CASSETTE         | Yes   |
|                                  |          |